

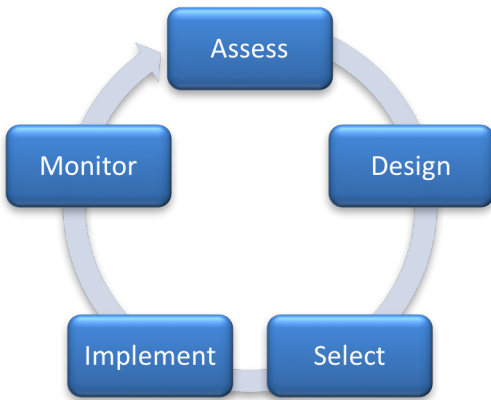


Our structured process and diverse services enable our clients to manage uncertainty throughout the enterprise on a sustained basis.

Strategic Decision Making (SDM)

Every organization needs valuable, accurate and timely business intelligence to facilitate strategic decisions. Our consultants assist clients in developing and implementing strategies designed to optimize the use of information and information systems. By leveraging global relationships, deploying proven methodologies and an independent consultative approach, our consultants deliver financially effective solutions.

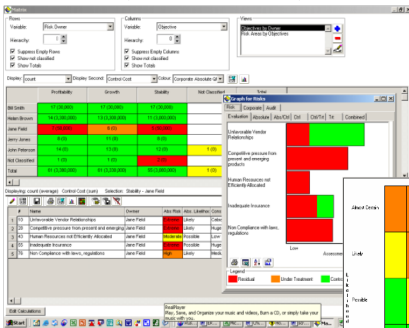
Consulting Methodology



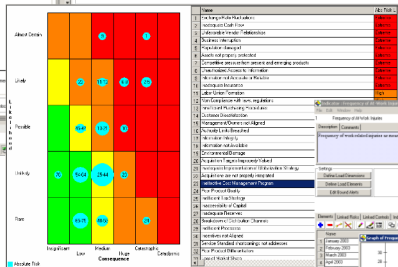
- ❑ Assess current decision support processes
- ❑ Collaborate on the design & improvement of processes
- ❑ Select technology and solutions for implementation
- ❑ Deploy & implement selected processes & solutions
- ❑ Assist and provide end-user training
- ❑ Monitor performance and effectiveness of decision support processes

Decision Support Technology & Software

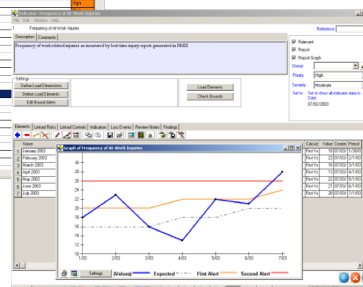
Analysis Capability



Visual Presentation



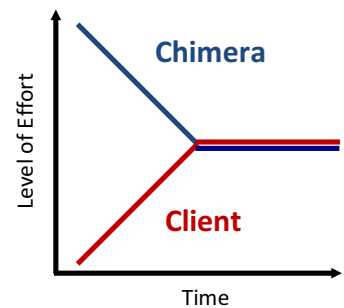
Tracking of Key Risk Indicators



Industry Expertise

- Arts
- Automotive
- Aviation and Aerospace
- Construction Services
- Entertainment
- Financial Institutions
- Fine Arts
- Healthcare
- Heavy Industry
- Hospitality
- Maritime Industries
- Natural Resources
- Non-Profits
- Pharmaceutical / Chemical
- Professional Services
- Education
- Real Estate
- Retail Trade
- Transportation
- Technology & Telecommunications

Involvement and Outcome



Client involvement is tailored and depends on a number of factors. Our objective is to efficiently partner with our clients to create the capabilities necessary for the company to manage risk on an ongoing basis.



CONSULTING SERVICES OVERVIEW

Current State Assessment Services

Are you sure that you are getting the most out of your Strategic Decision Making (SDM) Processes?

SDM Workflow Audit	Business Process Audit	SDM Technology Audit
We will baseline your SDM processes and related work flows, validate accuracy, and then develop actionable recommendations for improvement.	The aim of this service is to document and understand the “current-state” workflows of existing SDM processes and how it integrates with your existing technologies; in addition, we will identify key areas for improvement.	We will assess the overall quality of your technologies and systems in support of scalability, security levels, reliability parameters, and adequacy of whether it provides intelligence to meet your key business objectives

Process Improvement Services

Are you and your team working as effectively as possible?

Process Reengineering	SDM Reporting Strategy	Report Design
With this service we will help you streamline your SDM processes with support of key technology with the aim of reducing costs; reducing errors and increasing overall transparency.	Develop an overall SDM data management plan that will ensure that you are working as effectively as possible; including design of key risk indicators, performance and financial metrics to provide relevant business intelligence.	We will evaluate your existing SDM management reports and integrate with existing or new technology to ensure ongoing support of business objectives, including effective and timely decision support.

Business Requirements and Vendor Advocacy Services

Do you need help assessing the value of an SDM technology solution?

SDM Systems Design Services	Ad-hoc Consultancy
Evaluate existing SDM technology, systems support and infrastructure; validate return on investment, manage the selection process, strengthen third party vendor partnerships, objective ongoing advocacy.	Assist with “buy” or “build” decision process, business requirement documentation or validation; help ensure that the SDM technology strategy and solution supports key business objectives.

Why CHIMERA?

- Flexible, scalable services
- Access to vast array of risk response solutions
- Global presence
- Broad industry expertise
- Consistent commitment to SDM

Key Contacts

Michael Yip, *Managing Partner*
 (t) (917) 702-7009
 (e) my.chimeraglobal@gmail.com

Harry Powell, *Managing Partner*
 (t) (917) 336-1751
 (e) hp.chimeraglobal@gmail.com